

# 9100

# DATA SHEET



**WITTENBORG**

designed to last



# TECHNICAL DATA

## BREWER & BOILER

Z4000 ES/FB brewer with coffee capacity up to 15 grams  
Brewer washing with cleaning cycle, tablets optional  
Large capacity 800 cc espresso boiler

## CANISTER CAPACITIES

Bean hopper with insert 4.4 lb each side  
Bean hopper without insert 8.8 lb  
Number of soluble canisters: 4  
Cappuccino 4.0 lb (Cuprissimo)  
French Vanilla 4.0 lb (Cuprissimo)  
Chocolate 4.0 lb (Cuprissimo)  
4<sup>th</sup> Powder canister 2.2 lb

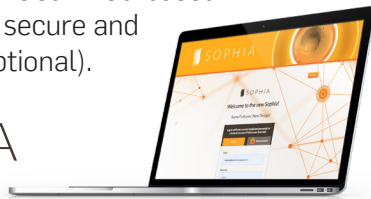
\*The weight of beans varies depending on type of roasting.

## TECHNOLOGY AND FEATURES

10 inch touchscreen  
Mechanical counter  
Waste container capacity: Approximately 8 lb  
Drip tray capacity: Approximately 30.4 oz  
Cup sizes: 0.75 to 16 oz  
Settings and software transfer using common USB  
Optional LTE Connectivity

## ONLINE SOLUTIONS

Manage your assets through our web-based application, connected to a secure and private cellular network (optional).



Order coffee without ever touching the brewer.

SCAN. SELECT. ENJOY.

**SOPHIA**  
TOUCHLESS SOLUTIONS



More Info



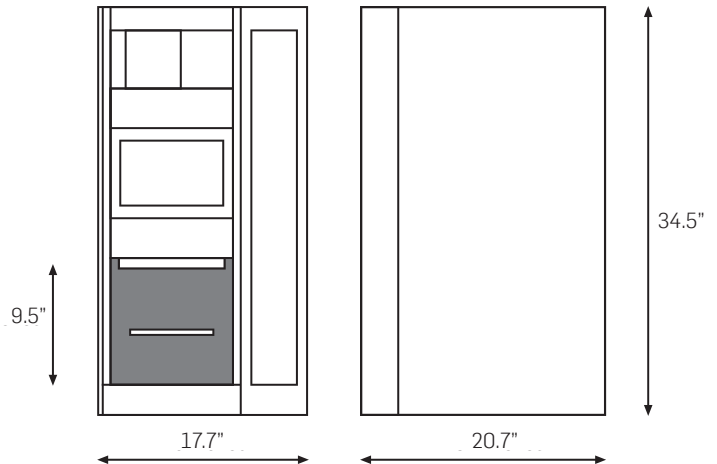
## OPTIONAL ACCESSORIES

Base stand (30.5" h • 17.75" w • 17.375" d)  
Grounds kit for base stand

## DIMENSIONS & POWER DATA

Dimensions: 34.5" h • 17.7" w • 20.7" d  
Machine weight: 165 lb  
Pallet weight: 188 lb  
Power consumption: 1260 W  
Heating element: 1100 W  
Voltage: 120 V

Added height with open top : 7.7 inches



Evoca North America  
2355, avenue Dalton, Québec (Québec) G1P 3S3, Canada  
T: 800-561-6162 - F: 800-463-2739  
www.evocagroupna.com

Evoca Group Headquarters  
Via Roma, 24, 24030 Valbrembo BG Italy  
T: +39 035606111 - F: +39 095606560  
www.evocagroup.com



23BRO01-W2A

Wittenborg 9100 | 2024-05